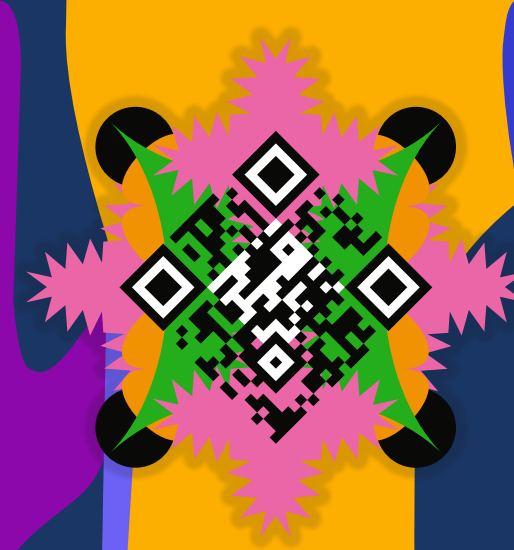


Scientific Organizers

- Michelle Barker, Research Software Alliance
- Mozhgan Chimeh, NVIDIA
- Sean Goggins, University of Missouri
- Anna-Lena Lamprecht, Utrecht University

Topics

- What approaches to repositioning DEI as central to the research software engineering community will prove most promising?
- Which combinations of social processes and supporting technology show effectiveness in advancing the community of research software engineers workers to direct research toward a future centered on DEI?



The Lorentz Center organizes international workshops for researchers in all scientific disciplines. Its aim is to create an atmosphere that fosters collaborative work, discussions and interactions. For registration see: www.lorentzcenter.nl

The multi-coloured hands represent the many different members of the research software engineering community. Poster design: SuperNova Studios . NL